



# Airplanes

Up, Up, and Away!

## Board Books

Board Book Bar - Barton, Byron  
*Planes*

Board Book Dem - Demarest, Chris L.  
*Plane*

Board Book Gom - Gomi, Taro  
*Little Plane*

Board Book Lig - Light, Steven  
*Planes Go*

## Picture Books

E Arv - Arvetis, Chris  
*Why Does It Fly?*

E Bar - Barton, Byron  
*Airplanes*

E Big - Amoroso, Cynthia  
*Airplanes*

E Bil - Bildner, Phil  
*The Hallelujah Flight*

E Cle - Clement, Nathan  
*Fly*

E Cou - Cousins, Lucy  
*Maisy Goes on a Plane*

E Cre - Crews, Donald  
*Flying*

E Hub - Hubbell, Patricia  
*Airplanes: Soaring! Diving! Turn-  
ing!*

E Ich - Ichikawa, Satomi  
*Come Fly with Me*

E Joh - Johanson, Carl  
*All Kinds of Planes*

E Lon - London, Jonathan  
*A Plane Goes Ka-Zoom*

E Lyo - Lyon, George Ella  
*Planes Fly!*

E Orm - Ormerod, Jan  
*Miss Mouse Takes Off*

E Roc - Rockwell, Anne  
*I Fly and Planes*

E Sav - Savage, Stephen  
*Little Plane Learns to Write*

E Stu - Sturges, Philemon  
*I Love Planes!*

E Sue - Suen, Anastasia  
*Air Show*

E Van - Van Lieshout, Maria  
*Flight 1-2-3*

## Early Readers

JE Yellow Sau - Saunders-Smith  
*Airplanes*

JE Blue Ber - Berger, Melvin  
*How Do Airplanes Fly?*

JE Blue Leg - Sander, Sonia  
*Ready for Takeoff!*

## Non-Fiction

JE 387.74 Par - Parker, Victoria  
*My First Trip On An Airplane*

j 629.13 Big  
*Big Book of Airplanes*

j 629.13 Bin - Bingham, Caroline  
*Airplane*

(CONTINUED on the next page)



Youth Services  
555 N. Maple Rd. | Saline, MI 48176  
www.salinelibrary.org | 734.429.5450



# Airplanes, continued

j 629.13 Gol - Goldish, Meish  
*Freaky-Big Airplanes*

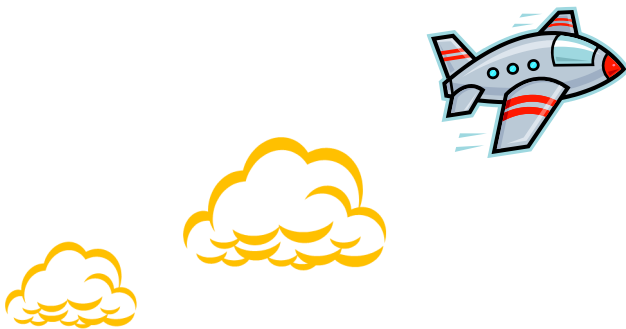
j 629.13 Hun - Hunter, Ryan Ann  
*Into the Air: An Illustrated Timeline of Flight*

j 629.13 Mas - Masters, Nancy Robinson  
*Airplanes*

j 629.13 Min - Minden, Cecilia  
*Pilots*

JE 629.13 Sup - Dubowski, Mark  
*Superfast Planes*

j 629.134 Oxl - Oxlade, Chris  
*Airplanes Inside and Out*



SALINE DISTRICT LIBRARY

Youth Services  
555 N. Maple Rd. | Saline, MI 48176  
[www.salinelibrary.org](http://www.salinelibrary.org) | 734.429.5450